



Luxury villa in Moraira with sea views

TEULADA - MORAIRA - REF. V-125



MORAGUESPONS  
MEDITERRANEAN HOUSES

Villa Kabul is located just a few metres from the sea. In a quiet residential environment and surrounded by vegetation that floods the horizon with green. Its avant-garde design offers different housing models. This luxury villa is divided over 3 floors with 4 bedrooms and 4 bathrooms and offers incredible views of the sea and the wooded mountains of Moraira. The owner has at his disposal an underground parking, an outdoor swimming pool and more than 150m2 of magnificent terraces. This villa has been conceived for living in the purest Mediterranean style. This property overlooks the garden-terrace-pool, offering views of a green recreational area and the relaxation that the reflections of the sun on the water transmit.



€ 1,450,000

560M<sup>2</sup> BUILT

940M<sup>2</sup> PLOT

4 ROOMS

4 BATHROOMS

SEA VIEWS

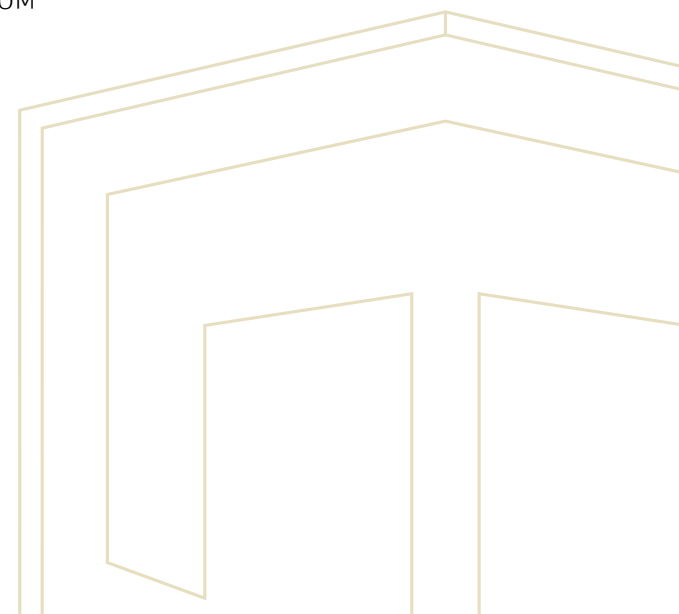
SWIMMING POOL

GARDEN

TERRACE

GARAGE

STORAGE ROOM











MORAGUE



MORAGUESPONS  
MEDITERRANEAN HOUSES











MORAGUE



MORAGUESPONS  
MEDITERRANEAN HOUSES

# VILLA KBL1

MORAIRA

## PLANTA BAJA

Vivienda	202.40m <sup>2</sup>
Porche	25.76m <sup>2</sup>
Voladizo	5.55m <sup>2</sup>

Terraza	105.98m <sup>2</sup>
Piscina	40.00m <sup>2</sup>

## PLANTA ALTA

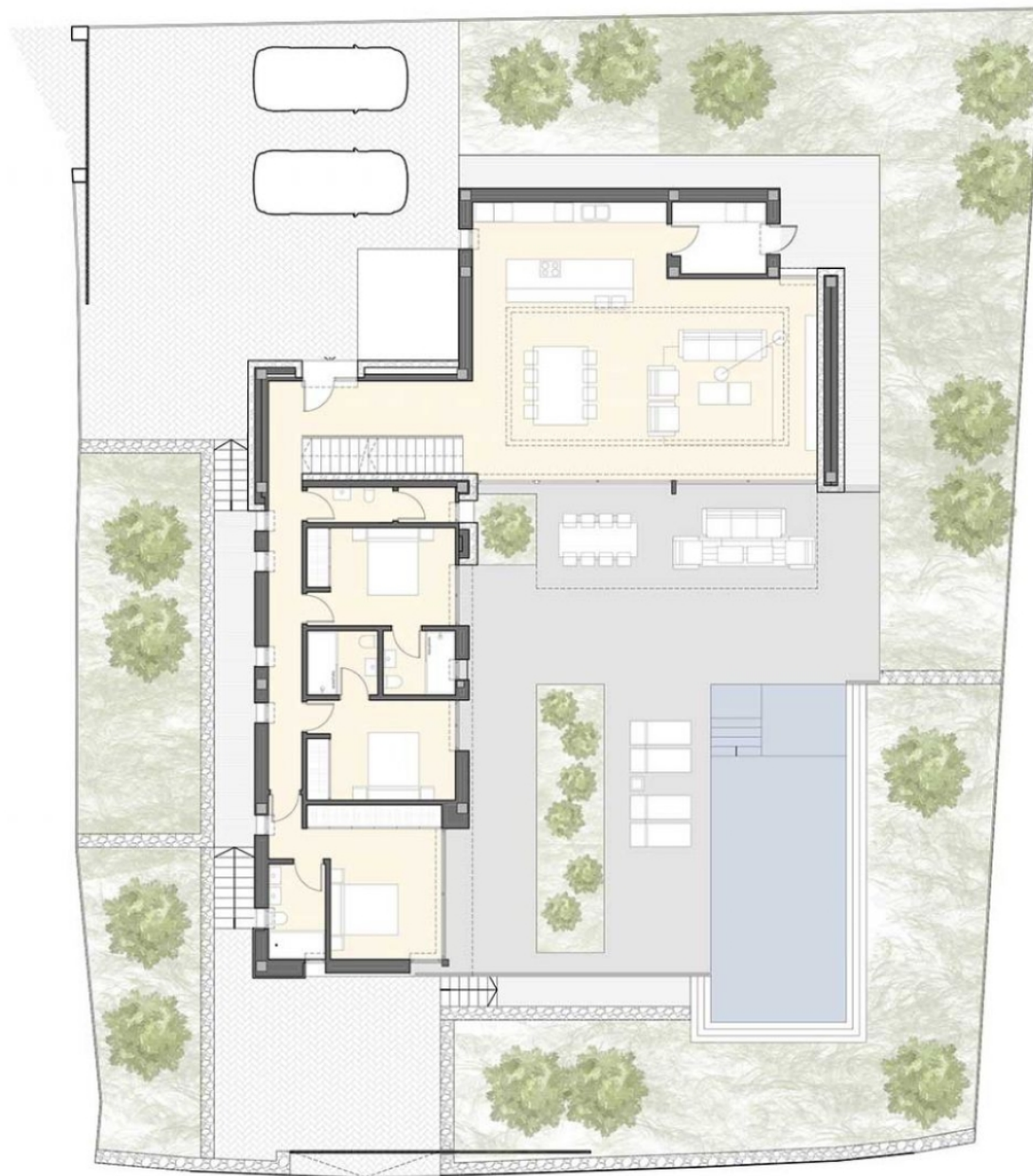
Vivienda	59.13m <sup>2</sup>
Voladizo	4.20m <sup>2</sup>

Terraza	47.22m <sup>2</sup>
---------	---------------------

## PLANTA SÓTANO

Vivienda	61.02m <sup>2</sup>
Garaje	40.45m <sup>2</sup>
Depuradora	7.10m <sup>2</sup>

EMPLAZAMIENTO



MORAGUESPONS  
MEDITERRANEAN HOUSES



# VILLA K B L 1

MORAIRA

## PLANTA BAJA

Vivienda	202.40m <sup>2</sup>
Porche	25.76m <sup>2</sup>
Voladizo	5.55m <sup>2</sup>

Terraza	105.98m <sup>2</sup>
Piscina	40.00m <sup>2</sup>

## PLANTA ALTA

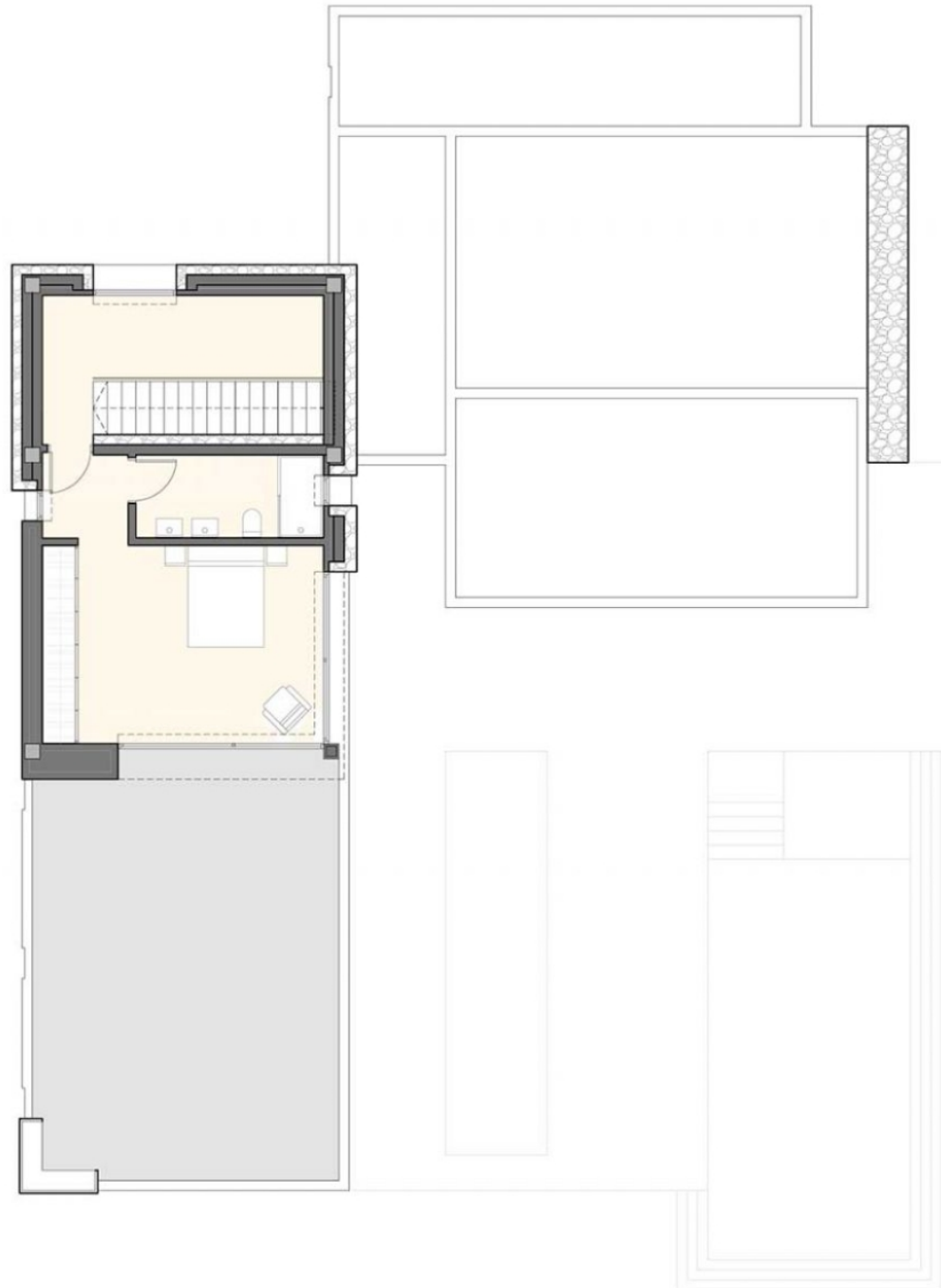
Vivienda	59.13m <sup>2</sup>
Voladizo	4.20m <sup>2</sup>

Terraza	47.22m <sup>2</sup>
---------	---------------------

## PLANTA SÓTANO

Vivienda	61.02m <sup>2</sup>
Garaje	40.45m <sup>2</sup>
Depuradora	7.10m <sup>2</sup>

PLANTA ALTA



MORAGUESPONS  
MEDITERRANEAN HOUSES

# VILLA KBL 1

MORAIRA

## PLANTA BAJA

Vivienda	202.40m <sup>2</sup>
Porche	25.76m <sup>2</sup>
Voladizo	5.55m <sup>2</sup>

Terraza	105.98m <sup>2</sup>
Piscina	40.00m <sup>2</sup>

## PLANTA ALTA

Vivienda	59.13m <sup>2</sup>
Voladizo	4.20m <sup>2</sup>

Terraza	47.22m <sup>2</sup>
---------	---------------------

## PLANTA SÓTANO

Vivienda	61.02m <sup>2</sup>
Garaje	40.45m <sup>2</sup>
Depuradora	7.10m <sup>2</sup>

PLANTA BAJA



MORAGUESPONS  
MEDITERRANEAN HOUSES



# VILLA K B L 1

MORAIRA

## PLANTA BAJA

Vivienda	202.40m <sup>2</sup>
Porche	25.76m <sup>2</sup>
Voladizo	5.55m <sup>2</sup>

Terraza	105.98m <sup>2</sup>
Piscina	40.00m <sup>2</sup>

## PLANTA ALTA

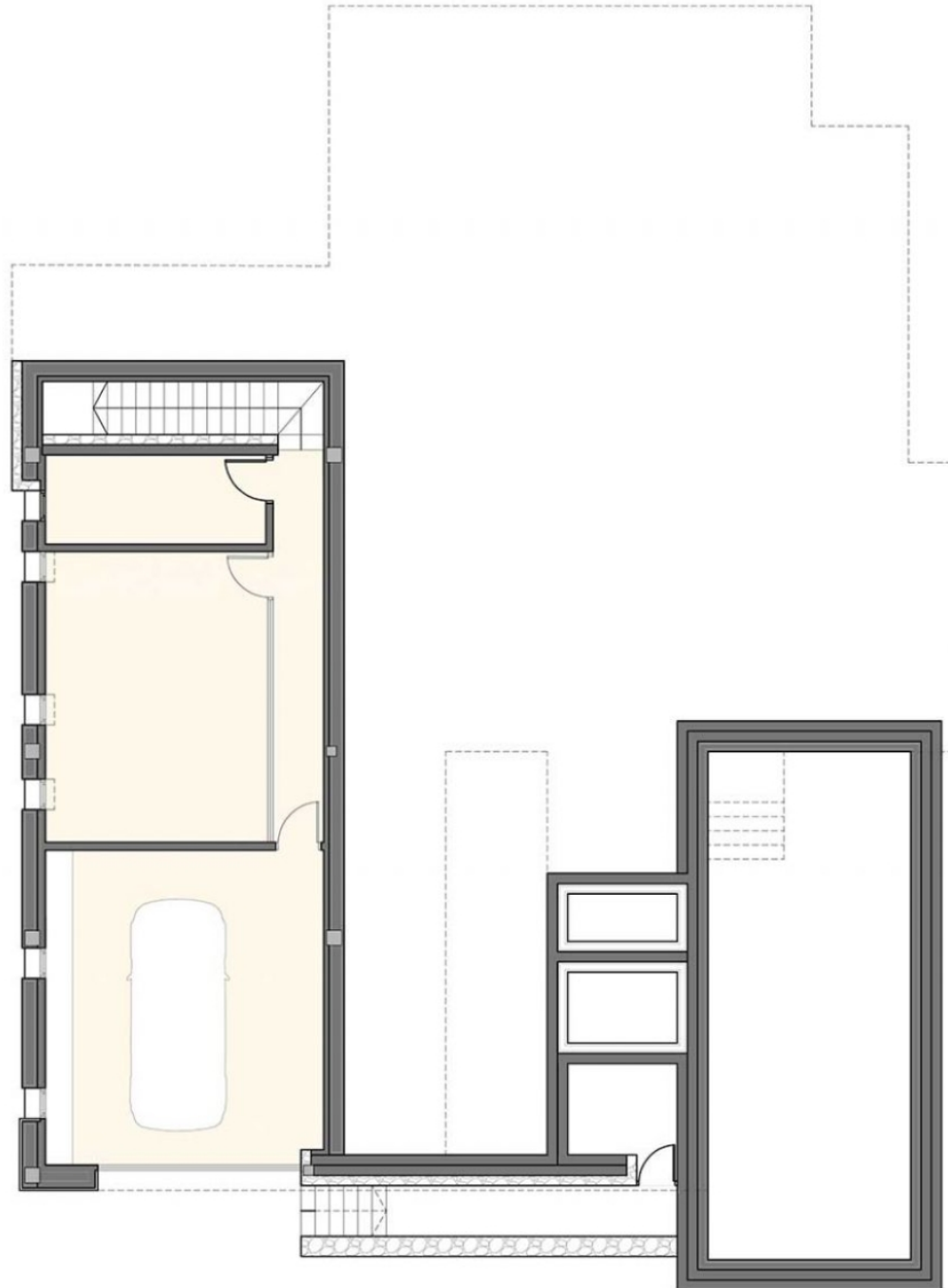
Vivienda	59.13m <sup>2</sup>
Voladizo	4.20m <sup>2</sup>

Terraza	47.22m <sup>2</sup>
---------	---------------------

## PLANTA SÓTANO

Vivienda	61.02m <sup>2</sup>
Garaje	40.45m <sup>2</sup>
Depuradora	7.10m <sup>2</sup>

PLANTA SÓTANO



MORAGUESPONS  
MEDITERRANEAN HOUSES



C/ Avda. Ausias March 13, Local 4,  
03730 Jávea, Alicante, Spain

+34 96 579 39 42  
+34 634 067 549

info@moraguespons.es  
www.moraguespons.es

M-F: 10:00-18:00  
S: 10:00-14:00

